

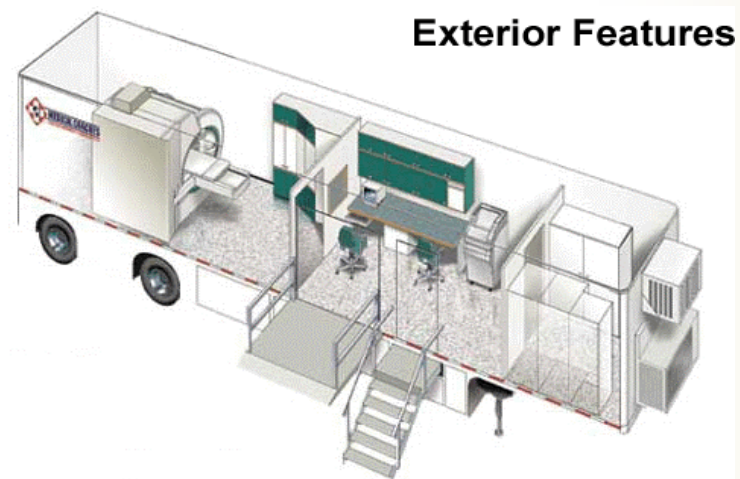


## Mobile Products

### We have integrated:

- P.E.T. scanners
- M.R.I. scanners
- C.T. scanners
- Lithotripsy units
- Dental Clinics
- Medical Units
- Blood Collection Units
- Cardiac Catheterization Lab Units
- Medical Waste Processing Units

and other complex and sensitive pieces of medical equipment into a mobile platforms.





## Trailer Description



- A minimum of 50ft outside turning radius is usually required, however this may vary according to the tractor.
- Adjustable front supports
- Water storage tank for humidifier with manual fill.
- Waste water drainage connections.
- The unit is supplied with a 50ft cable with a male electrical connector.
- The connector is Russellstoll 200Amp plug.



## Description

cont'd

It features a high speed Intel computer system with dual 39GB disk drives running on a software level is release 9.

The console is with modern high resolution 19in LCD monitors.

This unit uses the Enterprise gradient system which boasts 30mT/m Gradient Amplitude in cooperation with seven (7) channel 15KW Synergy RF system.





# Description

cont'd

## Standard Features:

-Dimensions:

Length: 48ft

Width: 6ft 8in

Height: 13ft 5in

Total Weight: ~ 60,000lbs

Power Input: 480V, 3 ph, 150A, 50-60Hz



-Air ride suspension

-Security locking door system

-Front or side mounted diesel generator for independent self powering on demand

-Climate control

-Body integrated shielding

-Towable by standard tractor

-Power cable access either side

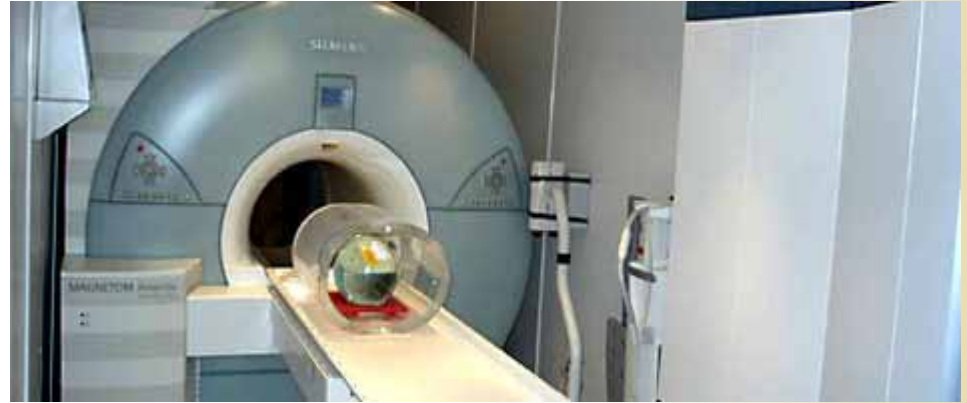
-Centralized power distribution



## Description

cont'd

- Custom logos on mobile
- Aluminum stretcher
- X-ray view boxes
- Rear service door
- 75KVA Diesel 3ph Generator
- Magnetic and/or RF or Lead (Pb) Shielding
- Soundproofing
- Special Antivibration Skin Design Construction





## Description

cont'd

- Self storing entrance steps and platform
- Exterior Zone Lighting
- Emergency Lighting
- “System On” Light
- Fire Extinguishers 2each
- Waterproof Floor Construction
- Two Phone Lines
- Data line

